

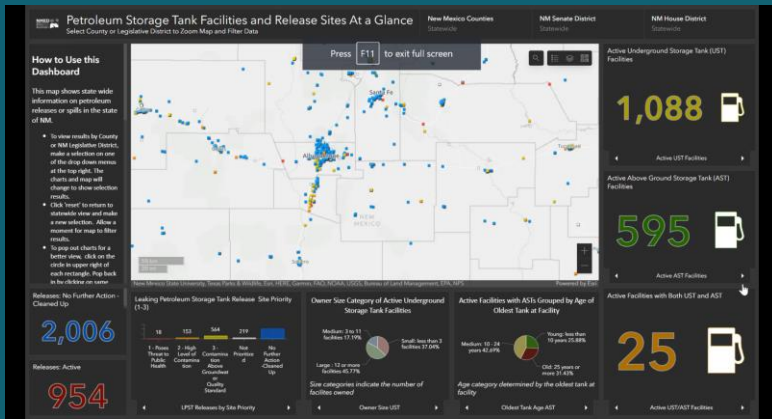
Geospatial Approach to a More Sustainable Oil & Gas Industry

Sunny Fleming – Environment & Conservation Industry Lead, State & Local Government



The State of the States

Existing Trends...



NM Environmental Department Releases & Spills Dashboard



Find address or image

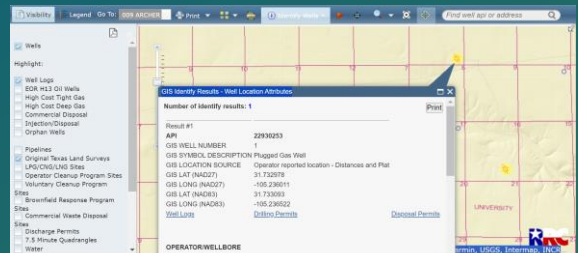
Photo (optional)
If available, include up to four photos of the possible orphaned well.

1 Drop image here or select image (maximum number of files allowed: 4)

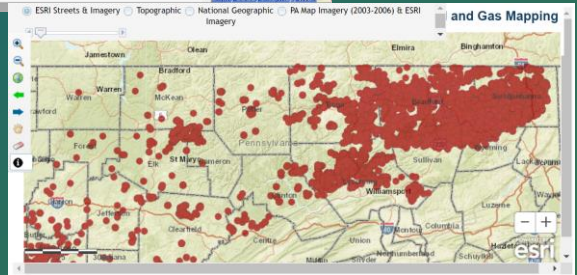
If known, check all that apply:

- Visible leakage
- Physical hazard
- Well interfering with business
- Structure in need of maintenance

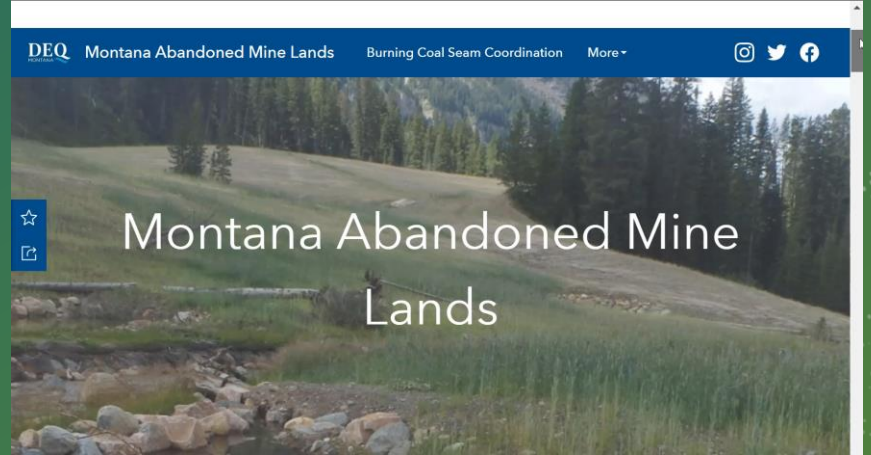
ADEQ Orphan Gas Well Citizen Report



PA Oil & Gas Viewer



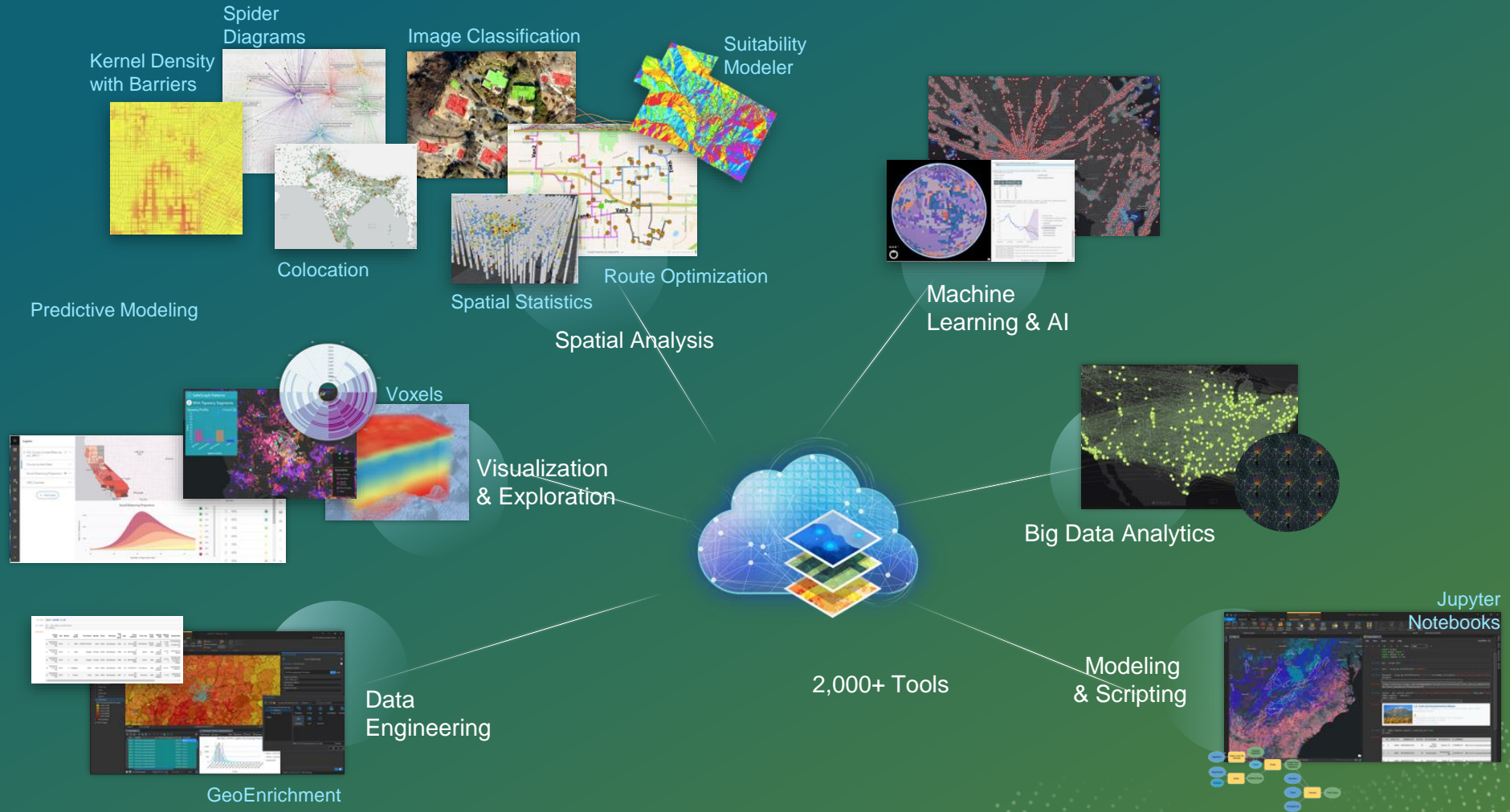
TX RRC GIS Viewer



Montana DEQ Abandoned Mine Lands Landowner Collaboration Hub

Leveraging the Investment Fully

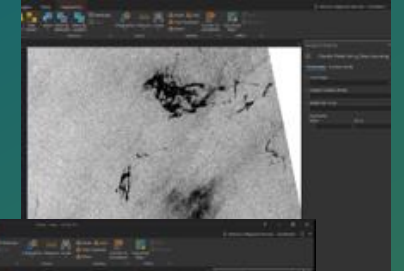
There's So Much More at Our Fingertips...



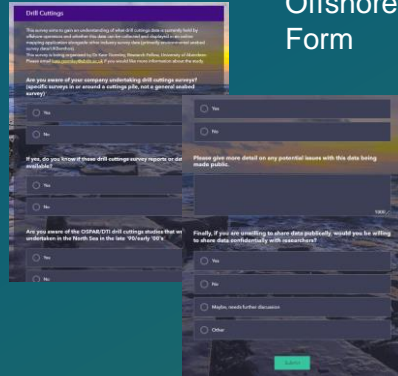
The Precedent Has Been Set

Examples From Across the Industry...

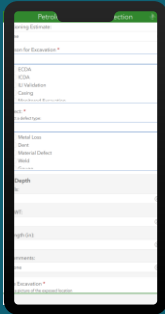
Noble Energy
Offshore Oil Slick
Detection
& Response



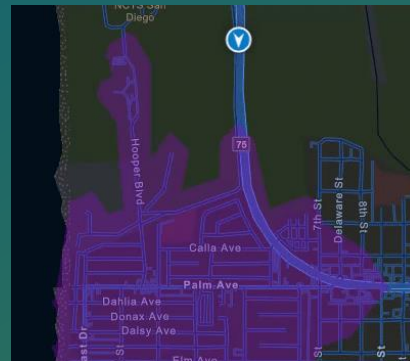
Offshore Drilling Inspection
Form



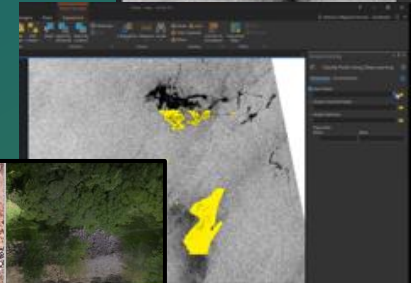
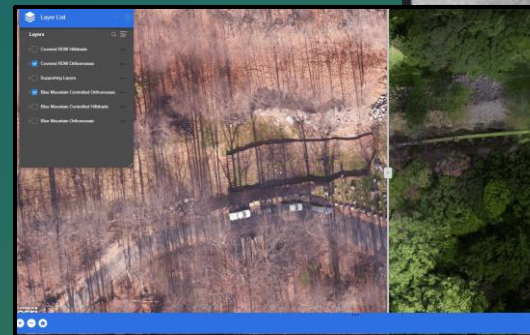
Enbridge
Pipeline
Inspection



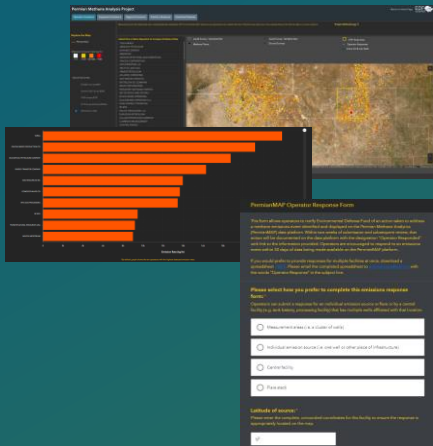
Safe and Compliant
Inspections



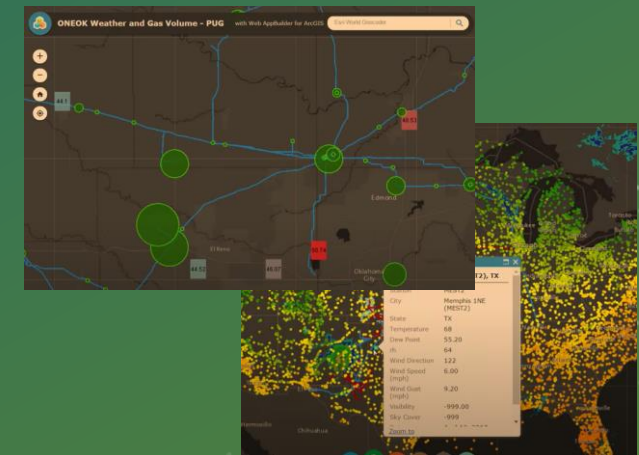
Change Detection



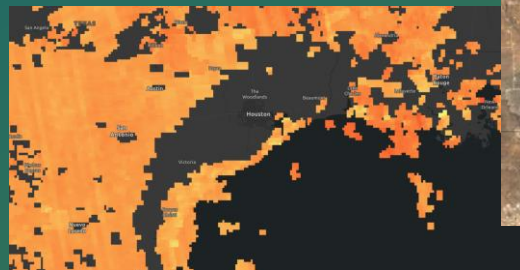
Environmental
Defense Fund
Permian Basin
Emissions
Dashboard



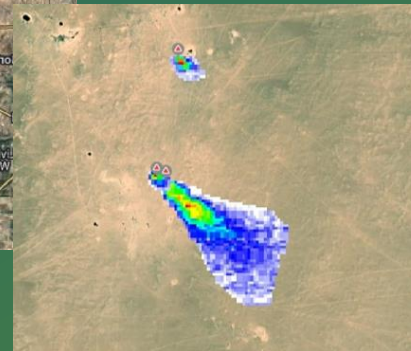
ONEOK
Weather vs. Gas Demand



Sentinel Methane 5P



NASA JPL



GHG Sat

The Bottom Line

Think Big and Ask For What You Need...

Many Solutions You Already Own The Tools To Configure

Where Does GIS Sit In Your Organization?

A Shared Platform Facilitates Streamlined Collaboration



esri[®]

**THE
SCIENCE
OF
WHERE**[®]

