

A series of horizontal bars of varying lengths and colors (teal, blue, green) are positioned on the left side of the slide, creating a modern, abstract background element.

Water Quality Data Enhancements to Drive Protection

Julie Espy, SAS National Director of Water Quality and Environmental Data Solutions



Data & Analytics Modernization to Drive Value



Establish the Single Source of Truth

Information Governance

SAS® Information Catalog - Discover Information Assets

Discover Information Assets
Ignite your analytics journey

What assets are you looking for?

CATALOG AT A GLANCE

WELCOME

Learn more in our [SAS Information Catalog User's Guide](#).
Also check out our [latest updates to SAS Information Catalog](#) and see what's new!

COLLECTIONS

Recent
Favorites

Search indexes: (no filter)

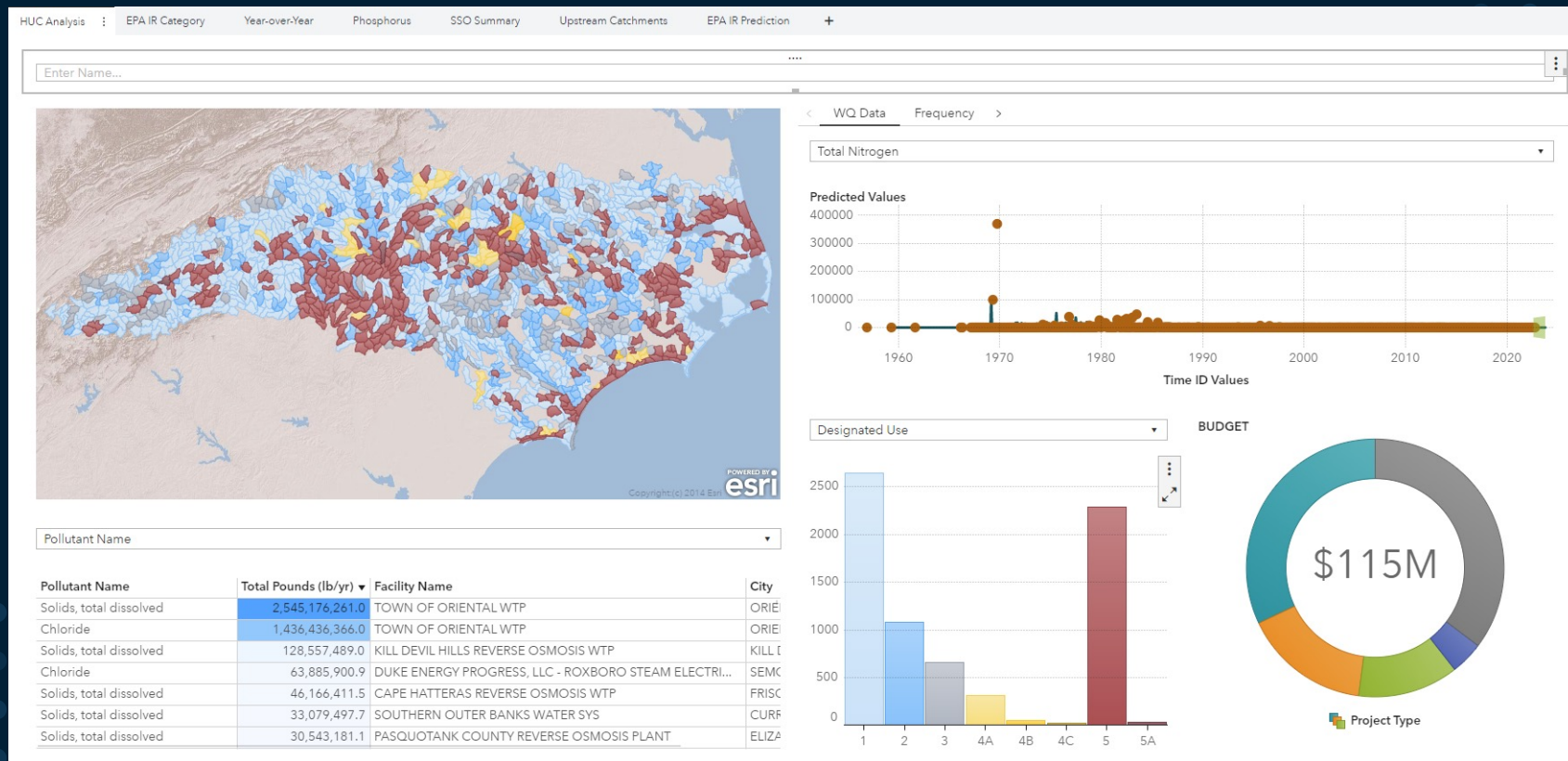
	Name	Status		Library	Date Created	Created By	Asset Type
<input type="checkbox"/>	NYS DEC	--			Dec 20, 2022 6:37 PM	Sarah Toups	Report
<input type="checkbox"/>	NC Water Demo	--			Jan 26, 2023 12:10 PM	Philip Griffith	Report
<input type="checkbox"/>	PA Water Demo	--			Jan 20, 2023 10:18 AM	Julie Espy	Report
<input type="checkbox"/>	NC HUC12 Upstream	--			Jan 10, 2023 3:01 PM	Steve Mangum	Report
<input type="checkbox"/>	Hurricane_Ian_Sit Rep	--			Mar 6, 2023 4:41 PM	Julie Espy	Report
<input type="checkbox"/>	PA Water Demo	--			Oct 20, 2022 1:53 PM	Philip Griffith	Report
<input type="checkbox"/>	NJ Water Demo	--			Nov 22, 2022 11:18 AM	Julie Espy	Report

25 items

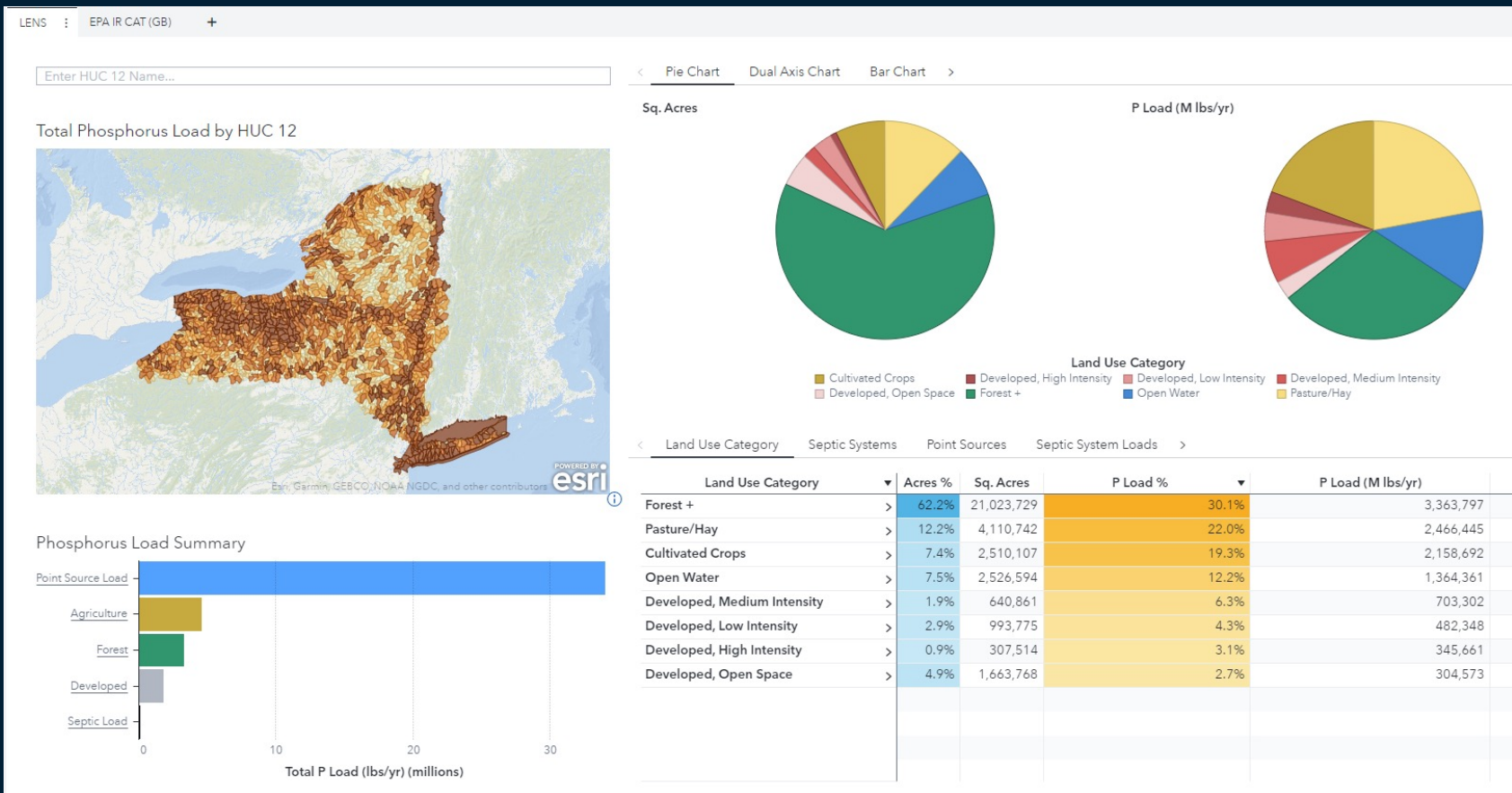
- Centralized location
- Powerful search
- Status of each data asset
- Info on data health
- Automatically identify and mask personal data (email, phone, address)

Integrate Data – Optimize Collaboration

EPA ATTAINS - EPA ECHO - EPA GRTS - EPA WQ PORTAL



Infuse Automation – Accelerate Decision Making



Visualize Insights & Return on Investments

