



The Value of Partnerships: A Key Ingredient to Navigating the Changes in Today's World

**Sara Parker Pauley
Director, Missouri Department of Conservation
March 2021**



**Natural Resources are an Endowment –
we are all in the business of protecting
and moving that endowment across
time to subsequent generations.**





Shared Opportunities:

- **Land and Water Conservation Fund**
- **Statewide Comprehensive Outdoor Recreation Plan for Missouri**
- **Outdoor Recreation**
- **ParksRx America**



Environmental and Cultural Compliance



Missouri DNR • @MoDNR • Dec 6

MoDNR's Northeast Regional staff met with members of @MDC_online to discuss compliance assistance at two conservation sites. Keeping open lines of communications and working together to meet compliance is key to protecting Missouri's natural resources.



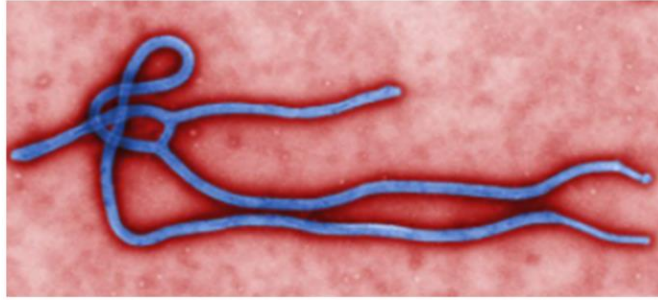
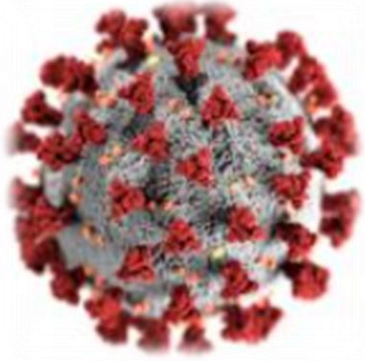
Missouri's Natural Areas Program

Natural Areas – Anchor Points of Conservation Opportunity Areas





Shared Challenges





Public Trust Resources



The world has made two pivots:

1. Pivoted to being outside and discovering nature.

2. Cognitive pivot to One Health recognizing the interconnection for human health and nature.





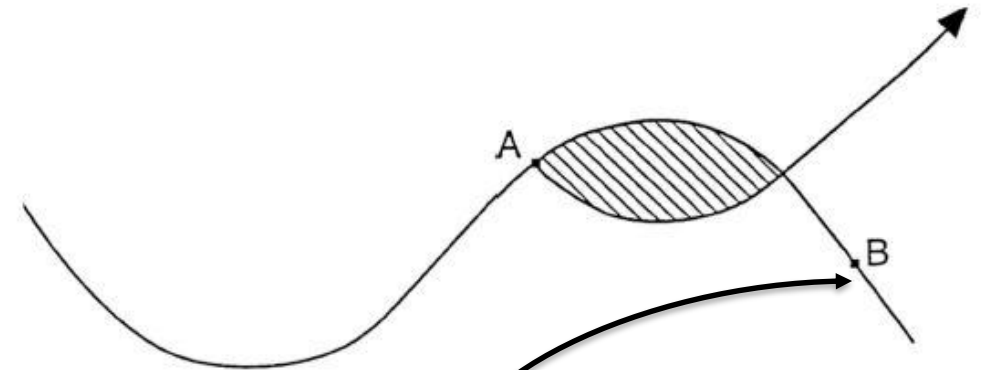
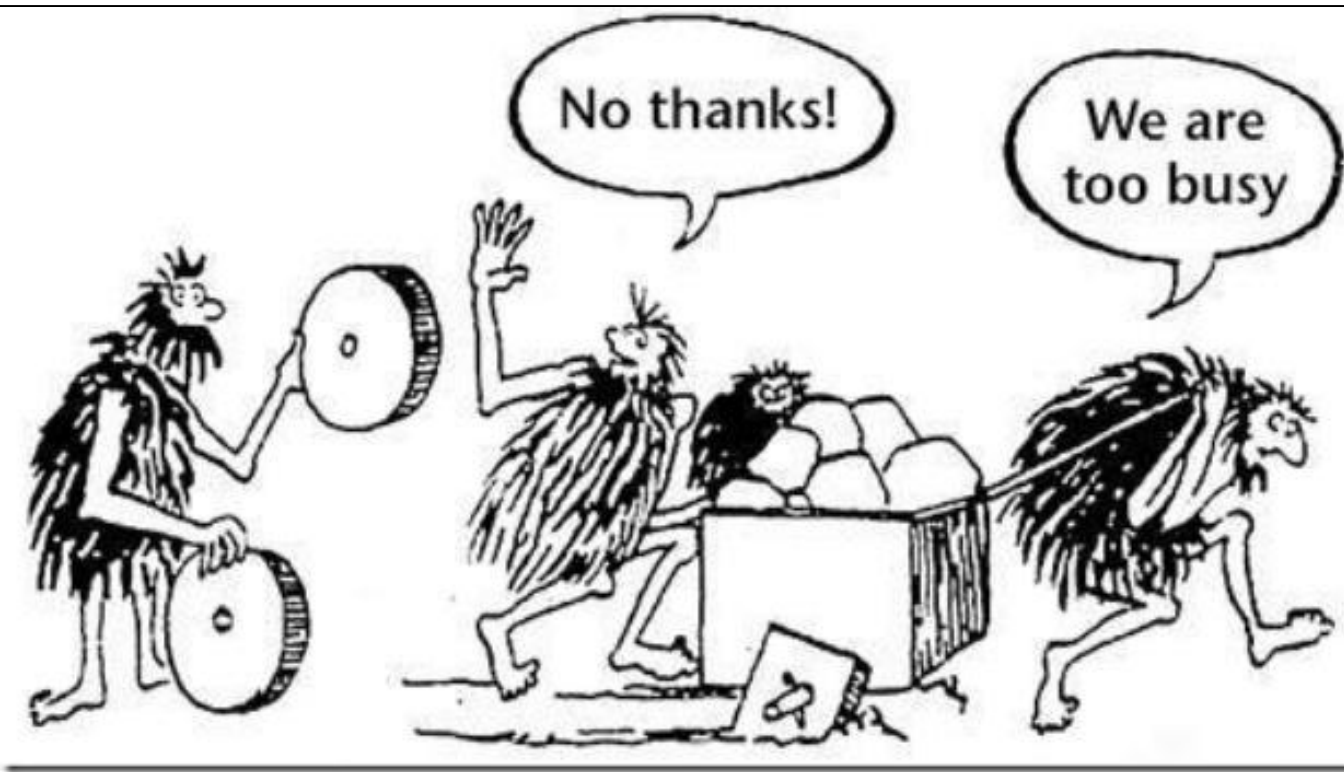
**World is changing at the fastest pace
we've ever seen**

Changing Natural Resources



A male elk with large, light-brown antlers stands in a field of tall grass. The elk is facing right, with its mouth open as if calling. The background is a dense forest of green trees.

The Changing Business of Conservation and Environmental Agencies



Source: Handy (1994, p. 51)

**Looking
Ahead**



Want to get more landowner participation in your watershed?

Fishers & Farmers

PARTNERSHIP

FOR THE UPPER

MISSISSIPPI RIVER BASIN



Potential Areas of Collaboration:

- Harmful Algal Bloom research to assess, prevent and manage HABs
- National Rivers and Streams Assessment informing National Fish Habitat Partnership
- Environmental DNA (eDNA) for species identification
- Research Support for Disposal of Chronic Wasting Disease (CWD) Contaminated Cervids
- Wildlife Fire and Climate Conditions
- EnviroAtlas







“It is not the
strongest of the
species that
survives, nor the
most intelligent,
but the one most
responsive to
change.”

~Charles Darwin, 1809



Serving nature and you[®]