

LOUISIANA DEPARTMENT OF ENVIROMENTAL QUALITY

Chuck Carr Brown, Ph.D. - Secretary



Katrina Flooding in New Orleans



2016 Flooding in Baton Rouge



Response Activities Pre-Disaster

- Unified Command Group Tabletop Exercises
- Participate in conference calls with GOHSEP, National Weather Service, Federal Agencies, State Agencies, etc. H-Hour Countdown
- LDEQ parish liaisons initiate contact with parishes and embed personnel if requested.
- Air Monitoring Sites are secured.
- Begin discussions with ESF-10 partners (LSP, LOSCO, EPA, Coast Guard) to discuss resource availability and post event response activities.
- Activate the LDEQ Incident Command Team (personnel assigned, Command Post established, post event activities are scheduled through the Incident Action Plan).
- A Declaration of Emergency and Administrative Order is developed and issued.
- Debris Task Force to contact parishes that may be affected as needed if parish has not renewed their pre-approved sites.
- Upon activation of the State EOC, LDEQ personnel will staff the ESF-10 desk to facilitate and coordinate tasking.
- Contact is made with select facilities to encourage facility preparations, inform them of impending DEAO, and ensure securement or removal of radioactive sources.
- Nuclear Regulatory Commission, FEMA, and Nuclear Power Plants are contacted to discuss pre-storm preparations by the facilities.

Unified Command Group



Response Activities Post-Disaster

- Assist with drafting the Fuel Waiver and submittal to EPA.
- Coordinate Disaster Initiated Reviews with FEMA on Nuclear Power Plants.
- May assist with Urban Search and Rescue.
- Perform Rapid Needs Assessments with LSP.
- Perform aerial assessments as conditions permit.
- Respond to chemical emergencies and oil spills.
- Assess orphan containers.
- Perform site inspections or phone assessments of facilities, waste water treatment plants, debris sites, UST sites, superfund sites, and radiation licensees.
- Parish Liaisons will assist with specific requests or provide assistance.
- LDEQ often assists/coordinates activities outside of the typical scope and mission of the Department's Disaster Response or normal operations.

SEARCH AND RESCUE



In the aftermath of Hurricane Katrina, LDEQ employees aided in the rescue of approximately 480 people. In the aftermath of the 2016 floods in Baton Rouge, LDEQ employees rescued approximately 200 people in one night from an impacted Nursing Home

EARLY RECONNAISSANCE, DAMAGE & ENVIRONMENTAL THREATS ASSESSMENT:



STORM DEBRIS MANAGEMENT: Construction & Demolition Wastes



STORM DEBRIS MANAGEMENT

Vehicles and Boats

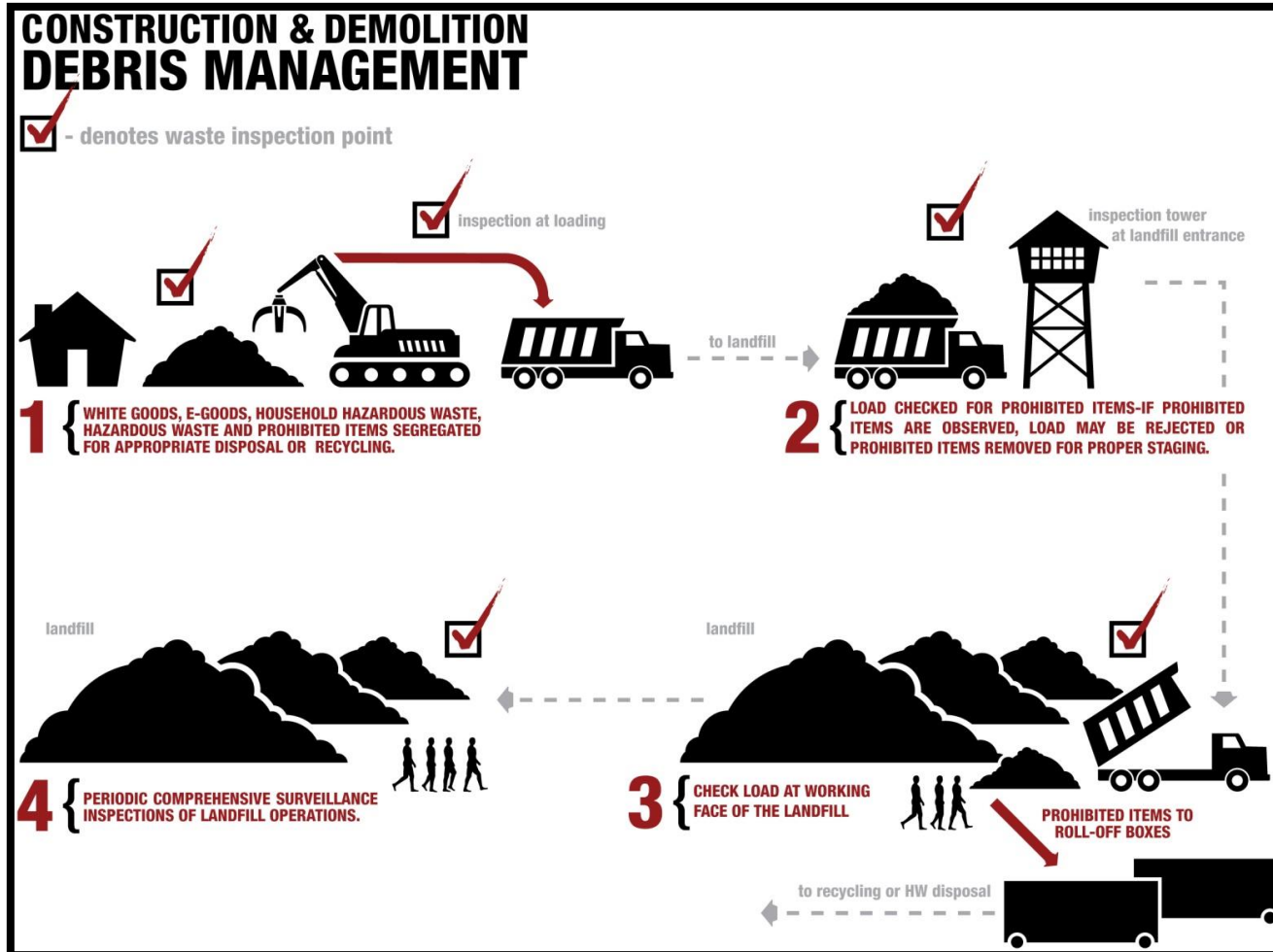


STORM DEBRIS MANAGEMENT: White Goods, Electronics, Household Haz Waste



STORM DEBRIS MANAGEMENT

Debris Segregation - Contractors



STORM DEBRIS MANAGEMENT

Debris Segregation – Contractors-Homeowners

Separating Your Debris
Debris should be placed curbside, without blocking the roadway or storm drains.

NO PICKUP ZONE
Any debris placed from the sidewalk toward your property will not be picked up.

DEBRIS SEPARATION
Separate debris into the six categories shown below.

DO NOT STACK OR LEAN
Placing debris near or on trees, poles, or other structures makes removal difficult. This includes fire hydrants and meters.

UNSURE WHERE TO PLACE DEBRIS?
If you don't have a sidewalk, ditch, or utility line in front of your house, place debris at the edge of your property before the curb.

Normal Household Trash
Normal household trash and bagged debris of any kind will not be picked up with debris as part of this program. You should continue to follow your normal garbage removal schedule.

VEGETATIVE DEBRIS

- Leaves (do not put in bags)
- Logs
- Plants
- Tree branches

CONSTRUCTION & DEMOLITION DEBRIS

- Building materials
- Carpet
- Drywall
- Furniture
- Lumber
- Plumbing

APPLIANCES & WHITE GOODS

- Air conditioners
- Dishwashers
- Freezers
- Refrigerators
- Stoves
- Washers, dryers
- Water heaters

ELECTRONICS

- Computers
- Radios
- Stereos
- Televisions
- Other devices with a cord

HOUSEHOLD HAZARDOUS WASTE

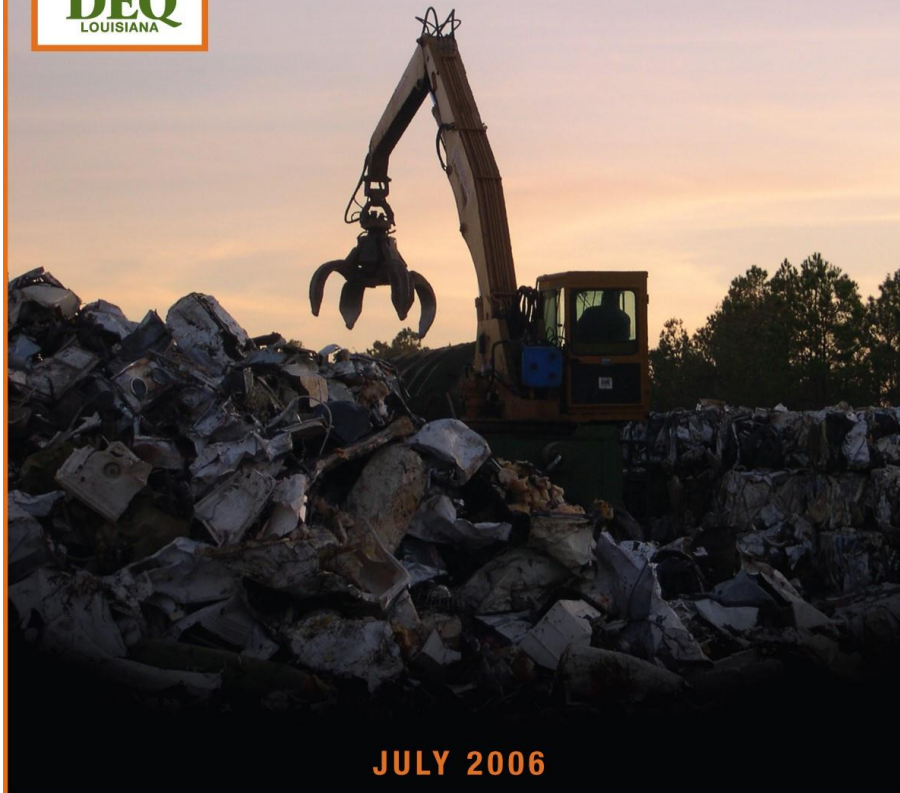
- Cleaning supplies
- Batteries
- Lawn chemicals
- Oils
- Oil-based paints and stains
- Pesticides



Debris Separation After Flooding

Dr. Chuck Carr Brown's personal account of flood debris

<https://www.youtube.com/watch?v=oA5TN-tIKGU>



JULY 2006

STATE OF LOUISIANA

COMPREHENSIVE PLAN FOR DISASTER CLEAN-UP AND DEBRIS MANAGEMENT

PREPARED BY THE LOUISIANA DEPARTMENT OF ENVIRONMENTAL QUALITY

CONTACT INFORMATION

Chuck Carr Brown, Ph. D.

225-219-3950

chuck.brown@la.gov

DEQ Website

www.deq.louisiana.gov